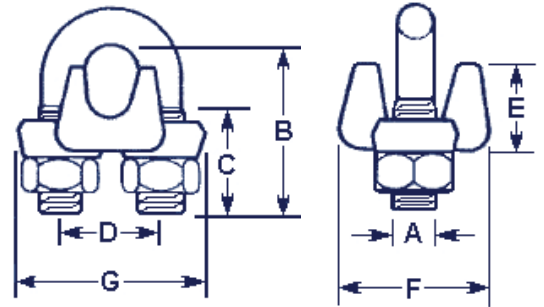


Wire Rope Fittings



Wire Rope Clips



DROP FORGED U-BOLT TYPE GALVANIZED FINISH

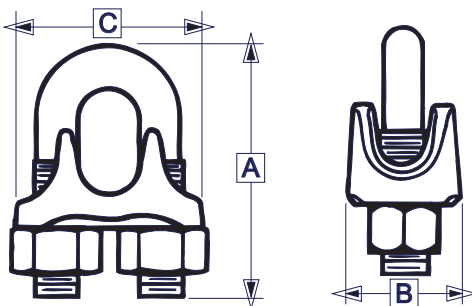
Meets Performance Requirements of
Federal Specifications FF-C-450 Type 1 Class 1.

Size Inches	Min. Clips Required	Torque in Ft. Lbs.*	Amt. Wire Rope to turn back (Inches)	Approx. Wt. in Pounds	Dimensions in Inches						
					A	B	C	D	E	F	G
1/8 **	2	4.5	3 1/4	.05	.19	.75	.44	.44	.38	.81	.94
3/16 **	2	7.5	3 3/4	.10	.25	.94	.56	.56	.50	.94	1.19
1/4	2	1.5	4 3/4	.18	.31	1.06	.56	.75	.63	1.19	1.50
5/16	2	30	5 1/4	.31	.38	1.44	.75	.88	.75	1.31	1.69
3/8	2	45	6 1/2	.46	.44	1.50	.75	1.00	.88	1.56	1.94
7/16	2	65	7	.73	.50	1.88	1.00	1.19	1.00	1.81	2.31
1/2	3	65	11 1/2	.73	.50	1.88	1.00	1.19	1.06	1.81	2.31
9/16	3	95	12	.96	.56	2.38	1.25	1.31	1.13	2.06	2.50
5/8	3	95	12	1.00	.56	2.38	1.25	1.31	1.25	2.06	2.50
3/4	4	130	18	1.50	.63	2.75	1.38	1.50	1.38	2.31	2.75
7/8	4	225	19	2.44	.75	3.19	1.44	1.81	1.69	2.63	3.31
1	5	225	26	2.70	.75	3.63	1.75	1.88	1.75	2.63	3.47
1 1/8	6	225	34	3.10	.75	4.00	2.00	2.00	1.88	2.81	3.56
1 1/4	7	360	44	4.60	.88	4.38	2.25	2.31	2.06	3.25	4.06
1 3/8	7	360	44	5.20	.88	4.63	2.31	2.38	2.25	3.44	4.25
1 1/2	8	360	54	5.90	.88	4.94	2.38	2.63	2.50	3.50	4.38
1 5/8	8	430	58	7.34	1.00	5.31	2.62	2.75	2.66	3.61	4.75
1 3/4	8	590	61	9.80	1.13	5.88	2.75	3.06	2.88	3.75	5.25
2	8	750	71	13.75	1.25	6.50	3.00	3.31	3.38	4.44	5.81
2 1/4	8	750	73	15.70	1.25	7.13	3.31	3.88	3.81	4.50	6.31
2 1/2	9	750	84	17.90	1.25	7.75	3.38	4.13	4.25	4.50	6.44
2 3/4	10	750	100	22.00	1.25	8.31	3.50	4.36	5.00	5.00	6.75
3	10	1200	106	32.00	1.50	9.19	3.88	4.75	5.25	5.31	7.56

* Based on clean, unlubricated threads. The table above shows the minimum torque required to reach maximum holding power of wire rope clips.

** U-Bolts and nuts zinc plated.

MALLEABLE GALVANIZED FINISH

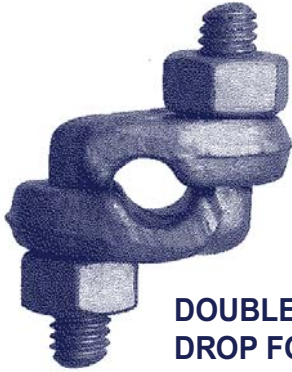


Size (In.)	Min. Clips Req'd.	Amt. Wire Rope to Turn Back (In.)	Torque in Lbs. Ft.*	Approx. Wt. in Pounds	Approximate Dimension in Inches		
					A	B	C
1/16*	3	4	2	.03	.80	.45	.69
1/8*	3	4 3/4	3	.04	.99	.56	.94
3/16	3	5 1/2	4.5	.063	1.19	.63	1.06
1/4	3	7	15	.13	1.60	.75	1.31
5/16	3	7 3/4	15	.15	1.62	.75	1.44
3/8	3	9 1/2	30	.21	2.01	.88	1.63
7/16	4	10 1/4	40	.37	2.44	1.06	1.88
1/2	4	15 1/4	45	.37	2.44	1.06	1.88
9/16	4	16	50	.59	2.81	1.28	2.09
5/8	4	16	75	.59	2.81	1.28	2.09
3/4	5	22 1/4	75	.84	3.12	1.56	2.38
7/8	5	23 1/2	130	1.25	3.69	1.81	2.88
1	6	31	130	1.66	4.07	2.00	3.00
1 1/8	7	39	200	2.43	4.75	2.06	3.38

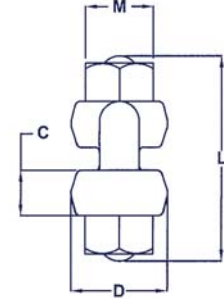
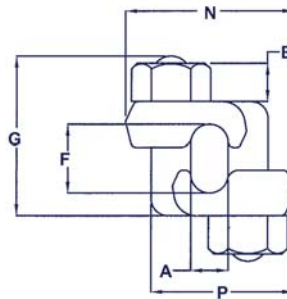
*NOTE: 1/16" and 1/8" are not covered by Federal Specification FF-C-450 D.



Wire Rope Clips



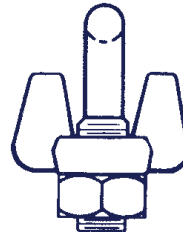
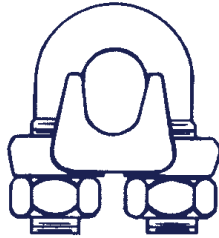
**DOUBLE SADDLE
DROP FORGED**



2

Size (In.)	Dimensions										Min. Number of Clips	Rope Turnback (In.)	Torque Ft./Lb.	Weight Lb.
	A (In.)	B (In.)	C (In.)	D (In.)	E Thread (In.)	F (In.)	G (In.)	L Approx (In.)	M (In.)	N (In.)				
3/16	0.28	1.25	0.34	0.94	3/8 to 16	0.50	1.63	2.26	0.69	1.28	2	4.00	30	21
1/4	0.28	1.25	0.34	0.94	3/8 to 16	0.50	1.63	2.26	0.69	1.28	2	4.00	30	21
5/16	0.34	1.38	0.44	1.06	3/8 to 16	0.63	1.66	2.19	0.69	1.41	2	5.00	30	27
3/8	0.41	1.56	0.50	1.06	7/16 to 14	0.75	1.75	2.25	0.75	1.85	2	5.50	45	45
7/16	0.50	1.78	0.56	1.25	1/2 to 13	1.00	2.19	2.75	0.88	2.06	2	6.50	65	65
1/2	0.50	1.78	0.56	1.25	1/2 to 13	1.00	2.19	2.75	0.88	2.06	3	11.00	65	65
9/16	0.66	2.25	0.69	1.50	5/8 to 11	1.25	2.69	3.31	1.06	2.59	3	12.75	130	113
5/8	0.66	2.25	0.69	1.50	5/8 to 11	1.25	2.69	3.31	1.06	2.59	3	13.50	130	113
3/4	0.81	2.69	0.88	1.81	3/4 to 10	1.50	3.38	4.32	1.25	3.06	3	16.00	225	144

Furnished in galvanized finish.



Furnished in galvanized finish.

DROP FORGED - TYPE 316

Size	Minimum Clips Required	Torque in ft. lbs.*	Approximate Weight in Pounds
1/8	2	4.5	.05
3/16	2	7.5	.106
1/4	2	15	.19
5/16	2	30	.30
3/8	2	45	.46
1/2	3	65	.68
5/8	3	95	1.0
3/4	4	130	1.5
7/8	4	225	2.44
1	5	225	2.70

Dimensions for drop forged stainless steel clips are the same as for the drop forged galvanized clips in the table above.

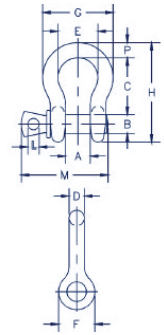
* Based on clean, unlubricated threads. The table above shows the minimum torque required to reach maximum holding power of wire rope clips.

STAINLESS STEEL, CAST MALLEABLE - TYPE 304

Size	Minimum Clips Required	Torque in ft. lbs.*	Approximate Weight in Pounds
1/8	3	3	.05
5/32	3	4	.06
3/16	3	4.5	.19
1/4	3	15	.19
5/16	3	15	.30
3/8	3	30	.46
1/2	4	45	.65
5/8	4	75	.78
3/4	5	75	1.09
7/8	5	130	1.63
1	6	130	2.15

* Based on clean, unlubricated threads. The table above shows the minimum torque required to reach maximum holding power of wire rope clips.

Screw Pin Anchor Shackles



Galvanized Carbon & Alloy Forged Steel Screw Pin Anchor Shackles

Carbon Steel

2

Nominal Size (in.)	Working Load Limit (t)*	Weight Each (lbs.)	Dimensions (in.)											Tolerance +/-	
			A	B	C	D	E	F	G	H	L	M	P	C	A
3/16	1/3	.06	.38	.25	.88	.19	.60	.56	.98	1.47	.16	1.12	.19	.06	.06
1/4	1/2	.10	.47	.31	1.13	.25	.78	.61	1.28	1.84	.19	1.38	.25	.06	.06
5/16	3/4	.19	.53	.38	1.22	.31	.84	.75	1.47	2.09	.22	1.66	.31	.06	.06
3/8	1	.31	.66	.44	1.44	.38	1.03	.91	1.78	2.49	.25	2.03	.38	.13	.06
7/16	1 1/2	.38	.75	.50	1.69	.44	1.16	1.06	2.03	2.91	.31	2.38	.44	.13	.06
1/2	2	.72	.81	.63	1.88	.50	1.31	1.19	2.31	3.28	.38	2.69	.5	.13	.06
5/8	3 1/4	1.37	1.06	.75	2.38	.63	1.69	1.50	2.94	4.19	.44	3.34	.69	.13	.06
3/4	4 3/4	2.35	1.25	.88	2.81	.75	2.00	1.81	3.50	4.97	.50	3.97	.81	.25	.06
7/8	6 1/2	3.62	1.44	1.00	3.31	.88	2.28	2.09	4.03	5.83	.50	4.50	.97	.25	.06
1	8 1/2	5.03	1.69	1.13	3.75	1.00	2.69	2.38	4.69	6.56	.56	5.07	1.06	.25	.06
1 1/8	9 1/2	7.41	1.81	1.25	4.25	1.16	2.91	2.69	5.16	7.47	.63	5.59	1.25	.25	.06
1 1/4	12	9.50	2.03	1.38	4.69	1.29	3.25	3.00	5.75	8.25	.69	6.16	1.38	.25	.06
1 3/8	13 1/2	13.53	2.25	1.50	5.25	1.42	3.63	3.31	6.38	9.16	.75	6.84	1.50	.25	.13
1 1/2	17	17.20	2.38	1.63	5.75	1.54	3.88	3.63	6.88	10.00	.81	7.35	1.62	.25	.13
1 3/4	25	27.78	2.88	2.00	7.00	1.84	5.00	4.19	8.86	12.34	1.00	9.08	2.25	.25	.13
2	35	45.00	3.25	2.25	7.75	2.08	5.75	4.81	9.97	13.68	1.22	10.34	2.40	.25	.13
2 1/2	55	85.75	4.13	2.75	10.50	2.71	7.25	5.69	12.87	17.84	1.38	13.00	3.13	.25	.25

Forged steel with Carbon or Alloy pins - quenched & tempered.

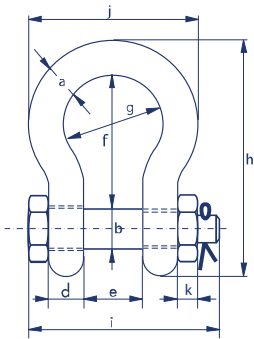
* Maximum Proof Load is 2 times the Working Load Limit (metric tons) and 2.2 times the Working Load Limit (short tons).
Minimum Ultimate Strength is 4.5 times the Working Load Limit (metric tons), and 5 times the Working Load Limit.

Alloy Steel

Nominal Size (in.)	Working Load Limit (t)*	Weight Each (lbs.)	Dimensions (in.)											Tolerance +/-	
			A	B	C	D	E	F	G	H	L	M	P	C	A
3/8	2	.31	.66	.44	1.44	.38	1.03	.91	1.78	2.49	.25	2.03	.38	.13	.06
7/16	2 2/3	.38	.75	.50	1.69	.44	1.16	1.06	2.03	2.91	.31	2.38	.44	.13	.06
1/2	3 1/3	.63	.81	.63	1.88	.5	1.31	1.19	2.31	3.28	.38	2.69	.50	.13	.06
5/8	5	1.38	1.06	.75	2.38	.63	1.69	1.50	2.94	4.19	.44	3.34	.69	.13	.06
3/4	7	2.25	1.25	.88	2.81	.75	2.00	1.81	3.50	4.97	.50	3.97	.81	.25	.06
7/8	9 1/2	3.61	1.44	1.00	3.31	.88	2.28	2.09	4.03	5.83	.50	4.50	.97	.25	.06
1	12 1/2	5.32	1.69	1.13	3.75	1.00	2.69	2.38	4.69	6.56	.56	5.07	1.06	.25	.06
1 1/8	15	7.25	1.81	1.25	4.25	1.16	2.91	2.69	5.16	7.47	.63	5.59	1.25	.25	.06
1 1/4	18	9.88	2.03	1.38	4.69	1.29	3.25	3.00	5.75	8.25	.69	6.16	1.38	.25	.06
1 3/8	21	13.25	2.25	1.50	5.25	1.42	3.63	3.31	6.38	9.16	.75	6.84	1.50	.25	.13

Meets or exceeds all requirements of ASME B30.26.

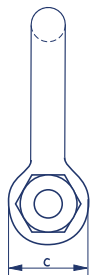
Shackles



GALVANIZED ALLOY BOLT TYPE ANCHOR SHACKLES

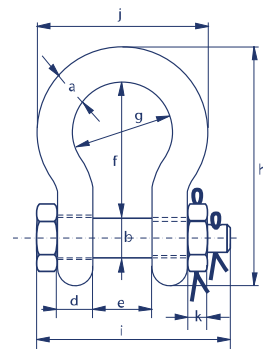
Working Load Limit	Diameter Bow	Diameter Pin	Diameter Eye	Width Eye	Width Inside	Length Inside	Width Bow	Length	Length Bolt	Width	Thickness Nut	Weight Each
Tons	a Inch	b Inch	c Inch	d Inch	e Inch	f Inch	g Inch	h Inch	i Inch	j Inch	k Inch	Lbs
3.3	1/2	5/8	1 11/32	17/32	7/8	2	1 9/32	3 19/32	3 9/32	2 1/2	17/32	0.97
5	5/8	3/4	1 19/32	5/8	1 3/32	2 17/32	1 23/32	4 1/2	3 29/32	3 1/8	11/16	1.74
7	3/4	7/8	1 7/8	3/4	1 1/4	3	2	5 11/32	4 17/32	3 23/32	25/32	2.78
9.5	7/8	1	2 3/32	7/8	1 7/16	3 9/32	2 9/32	6 5/32	5 5/32	4 3/16	29/32	4.14
12.5	1	1 1/8	2 11/32	1	1 23/32	3 3/4	2 11/16	6 29/32	5 15/16	4 7/8	1	6.13
15	1 1/8	1 1/4	2 5/8	1 1/8	1 7/8	4 1/4	2 15/16	7 3/4	6 19/32	5 3/8	1 1/8	8.53
18	1 1/4	1 3/8	2 29/32	1 9/32	2	4 17/32	3 9/32	8 9/16	7 1/32	6 3/32	1 1/4	11.6
21	1 3/8	1 1/2	3 5/32	1 3/8	2 1/4	5 1/4	3 5/8	9 7/16	7 25/32	6 23/32	1 11/32	15.3
30	1 1/2	1 5/8	3 1/2	1 17/32	2 11/32	5 3/4	3 29/32	10 5/16	8	7 3/16	3/4	19.38
40	1 3/4	2	4 1/8	1 25/32	2 29/32	7	4 15/16	12 11/32	9 19/32	8 29/32	15/16	33.07
50	2	2 1/4	4 11/16	2 31/32	3 9/32	7 3/4	5 7/16	14 3/32	10 5/8	9 13/16	1 3/32	45.64
80	2 1/2	2 3/4	5 3/4	2 9/16	4 1/8	10 1/4	7 9/32	18 1/4	13	12 15/16	1 5/16	90.61
110	3	3 1/4	6 7/16	3 15/16	5	12 15/16	7 1/2	21 29/32	14 25/32	14	1 19/32	137.13
140*	3 3/4	3 3/4	8 1/2	3 17/32	5 11/16	15	9 11/32	26 9/32	17 5/16	16 3/8	2	242.51
175*	4	4 1/4	9 5/8	3 15/16	6 17/32	15 3/4	10 13/16	27 5/8	19 9/32	19 1/8	2 3/8	352.74

* = round headed bolt



ANCHOR SHACKLE WITH BOLT
(TYPE IVA, CLASS 3)

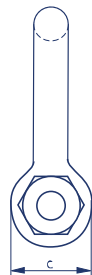
Meets or exceeds federal specification RR-C-271.



GALVANIZED WIDE MOUTH ALLOY TOWING SHACKLES

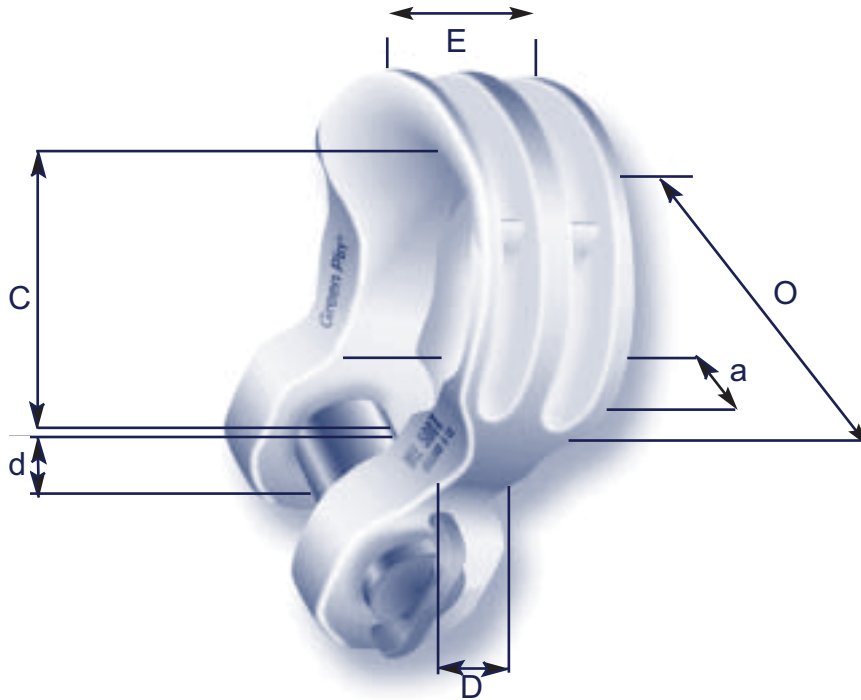
Working Load Limit	Diameter Bow	Diameter Pin	Diameter Eye	Width Eye	Width Inside	Length Inside	Width Bow	Length	Length Bolt	Width	Thickness Nut	Weight Each
Tons	a Inch	b Inch	c Inch	d Inch	e Inch	f Inch	g Inch	h Inch	i Inch	j Inch	k Inch	Lbs
22	1 1/2	1 5/8	3 1/2	1 17/32	4 3/16	8 1/2	6 9/32	12 9/16	9 3/4	9 1/4	3/4	27.56
30	1 3/4	2	4 1/8	1 25/32	5	9 3/4	6 7/8	14 9/16	11 11/16	10 7/16	15/16	39.68
40	2	2 1/4	4 11/16	1 31/32	5 3/4	10 3/4	8 5/32	16 3/16	13 5/16	12 1/8	1 3/32	55.12
55	2 1/2	2 3/4	5 3/4	2 9/16	6 1/2	12 3/8	8 3/8	19 3/16	15 5/16	13 1/2	1 5/16	105.82
100	3	3 1/4	6 7/16	2 15/16	7 1/4	13	10	20 7/8	17	15 7/8	1 19/32	154.32

* = round headed bolt



Green Pin® ‘Sling Shackles’

For use with large slings, to provide better D/d bending ratio to the sling.



2

- Material: alloy steel, quenched and tempered
- Proofload test certification Lloyd’s Register of Shipping
- Design factor: 5:1
- Finish: body aluminum painted, pin green paint
- Sling Shackles are supplied including material certificates according to EN10204 (DIN 50 049-3.1b)
- The Sling Shackles are Ultra-sonic- and Magnetic Particle inspected.

Working Load Limit (m.t)	Dia Body D (Inches)	Dia Pin d (Inches)	Inside Width a (Inches)	Inside Length C (Inches)	Width of Bow O (Inches)	Bearing Surface E (Inches)	Weight Each (Lbs.)
55	2 3/8	2 1/4	3 3/4	9 7/8	6 5/16	4	110
75	2 3/4	2 3/4	4 1/8	11 3/8	7 5/16	4 3/4	148
125	3 3/8	3 5/32	5 1/8	14 3/8	8 11/16	6	243
150	3 3/4	3 3/4	5 17/32	15 3/8	9 7/8	6 3/4	353
200	4 5/16	4 1/8	5 29/32	18 7/8	10 7/8	8	485
250	5	4 3/4	6 23/32	21 1/4	11 7/8	9 1/2	705
300	5 5/16	5 5/16	7 9/32	23 5/8	13 3/4	10 1/2	772
400	6 5/16	6 5/16	8 11/16	22 5/8	14 9/16	12 5/8	1,400
500	6 3/4	7 1/8	9 7/8	26 3/4	17 3/4	13 3/8	1,770
600	7 1/2	7 7/8	10 7/8	29 1/8	19 1/4	14 5/8	2,161
700	7 7/8	8 1/2	11 13/16	29 1/2	21 1/4	15 3/4	2,778
800	8 5/8	9 1/8	12 3/4	33 1/2	21 7/8	16 9/16	3,153
900	9 9/16	10	13 3/4	33 1/2	23	17 3/8	3,638
1000	10 1/4	10 5/8	15	33 5/8	24 1/8	18 1/8	4,674
1250	11 1/4	11 7/8	16 15/16	36 5/8	25 5/8	20 7/8	5,291
1500	11 5/8	12 5/8	18 1/8	37 3/8	26 3/4	22	6,570

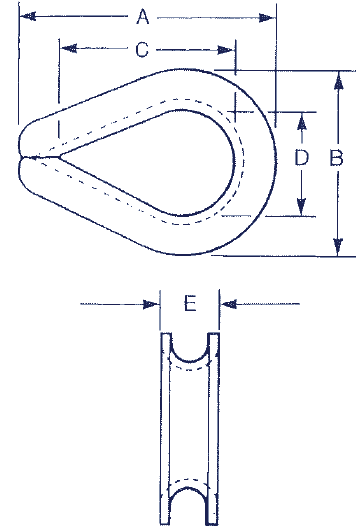


Wire Rope Thimbles

GALVANIZED HEAVY DUTY WIRE ROPE THIMBLES

Hot dip galvanized. Meets or exceeds the performance requirements of Federal Specification FF-T-276b, Type III.

For Rope Diameter Inches	DIMENSIONS IN INCHES					Approx. Weight Each in Pounds
	A	B	C	D	E	
1/4	2.19	1.50	1.63	.88	.41	.075
5/16	2.50	1.81	1.88	1.06	.50	.14
3/8	2.88	2.13	2.13	1.13	.66	.25
7/16	3.25	2.25	2.38	1.25	.75	.36
1/2 - 9/16	3.63	2.56	2.75	1.50	.84	.51
5/8	4.25	3.00	3.25	1.75	1.00	.75
3/4	5.00	3.50	3.75	2.00	1.25	1.47
7/8	5.50	4.00	4.25	2.25	1.38	1.85
1	6.13	4.38	4.50	2.50	1.56	3.00
1 1/8 - 1 1/4	7.00	5.63	5.13	2.88	1.88	3.80
1 1/4 - 1 3/8	9.06	6.75	6.50	3.50	2.25	8.60
1 3/8 - 1 1/2	9.06	7.00	6.50	3.50	2.63	11.00
1 5/8	11.25	8.13	8.00	4.00	2.72	11.80
1 3/4	12.19	8.25	9.00	4.50	2.88	17.90
1 7/8 - 2	15.13	10.25	12.00	6.00	3.13	25.00
2 1/4	17.13	11.88	14.00	7.00	3.63	45.00
2 1/2 *	22.25	12.75	17.50	8.00	4.38	63.50

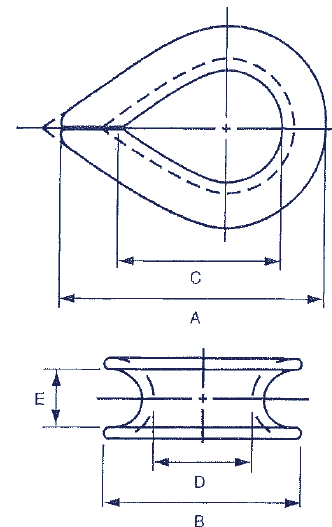


* 2 1/2 available with or without gusset plates.

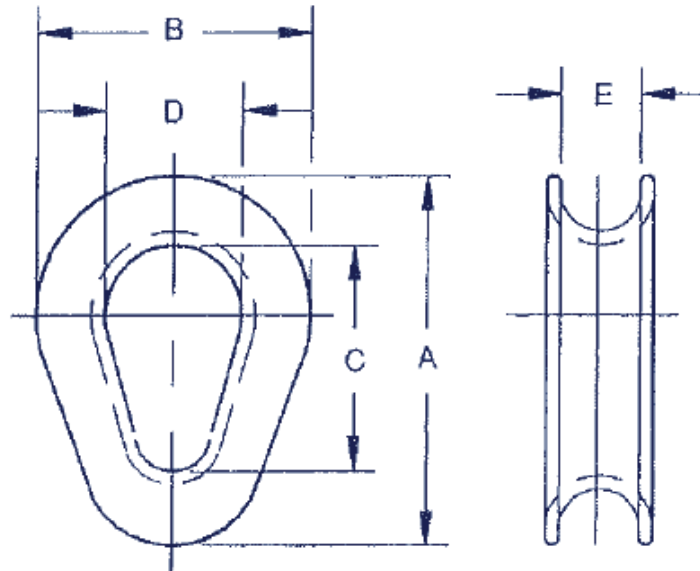
GALVANIZED STANDARD DUTY WIRE ROPE THIMBLES

Meets or exceeds the performance requirements of Federal Specification FF-T-276b, Type II.

For Rope Diameter Inches	DIMENSIONS IN INCHES					Approx. Weight Each in Pounds
	A	B	C	D	E	
1/8	1.88	1.06	1.25	.69	.16	.02
3/16	1.88	1.06	1.25	.69	.22	.023
1/4	1.94	1.06	1.31	.69	.28	.05
5/16	2.13	1.25	1.50	.81	.38	.054
3/8	2.38	1.47	1.63	.94	.44	.062
1/2	2.75	1.75	1.88	1.13	.56	.13
5/8	3.50	2.38	2.25	1.38	.69	.22
3/4	3.75	2.69	2.50	1.63	.81	.50
7/8	5.00	3.19	3.50	1.88	.94	.85
1	5.69	3.75	4.25	2.50	1.06	1.00
1 1/8 - 1 1/4	6.25	4.31	4.50	2.75	1.31	1.75



Hawser Thimbles

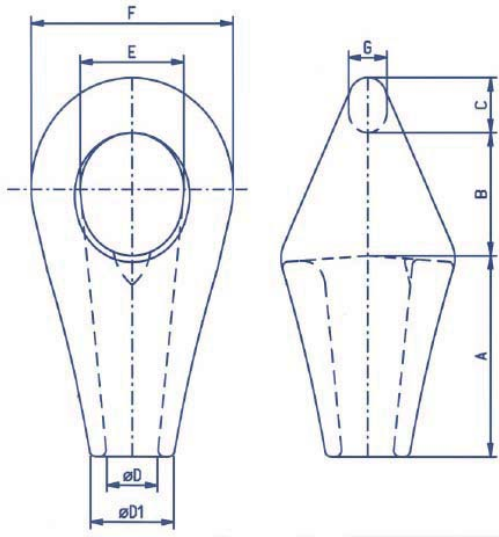


HAWSER THIMBLES
Hot galvanized, Cast Alloy Steel

For Rope Diameter Inches	DIMENSIONS IN INCHES					Approx. Weight Each in Pounds
	A	B	C	D	E	
5/8 - 3/4	6 7/8	4 1/2	5	3	1 3/16	3.5
7/8 - 1	8 5/8	5 3/4	6 1/4	3 3/4	1 7/16	6.0
1 1/8 - 1 1/4	10	6 5/8	7 1/8	4 3/16	1 11/16	8.5
1 3/8 - 1 1/2	12 1/8	8	8.75	5	2 3/16	18.5
1 5/8 - 1 3/4	12 3/4	8	9 1/4	5	2 7/16	24.0
1 7/8 - 2	14 3/4	9 1/2	10 3/4	6	2 11/16	30.5
2 1/8 - 2 1/4	17 1/8	11	12 1/2	7	3 1/8	56.0
2 3/8 - 2 1/2	19 1/4	12 3/4	14 1/4	8 1/4	3 7/8	95.0
2 3/4 - 3	24 1/2	17	15	9 3/8	4 15/16	135.0

Mooring Sockets

Dimensions



Available upon request at additional cost:

- Proof loading
- ABS, DNV, 3rd party witness testing
- Nondestructive Testing

MBL Tons	Rope Dia. (Inches)	A	B	C	D	D1	E	F	G	Weight (Lbs.)
140	1 1/4 - 1 3/8	5.5	3.3	1.5	1.5	2.5	2.9	4.9	1.4	15.4
160	1 1/2 - 1 5/8	6.3	4.3	1.6	1.7	2.7	3.6	5.1	1.5	22.0
200	1 3/4 - 1 7/8	7.4	5.0	2.0	2.0	3.1	4.3	7.1	1.8	37.5
250	2 - 2 1/8	8.5	4.9	2.2	2.2	3.1	4.5	7.9	2.0	52.9
300	2 1/4 - 2 3/8	9.0	5.7	2.5	2.5	3.5	5.3	9.0	2.2	72.7
400	2 1/2 - 2 5/8	9.8	6.3	2.9	2.9	4.4	6.3	10.4	2.5	110.2
500	2 3/4 - 2 7/8	11.0	6.9	3.1	3.1	4.7	6.7	10.9	2.7	130.0
600	3 - 3 1/8	12.4	8.3	3.3	3.4	5.0	7.2	11.8	2.9	163.1
700	3 1/4 - 3 3/8	13.4	8.1	3.9	3.6	5.2	8.0	12.6	3.5	196.2
800	3 1/2 - 3 5/8	14.2	8.7	4.1	3.9	5.5	8.5	13.4	3.7	229.3
900	3 3/4 - 4	15.0	9.4	4.3	4.2	5.9	9.2	14.8	3.9	295.4
1000	4 1/4 - 4 1/2	17.7	10.2	4.9	4.7	6.5	9.9	15.7	4.3	396.8

Dimensions are approximate only and subject to change without notice.

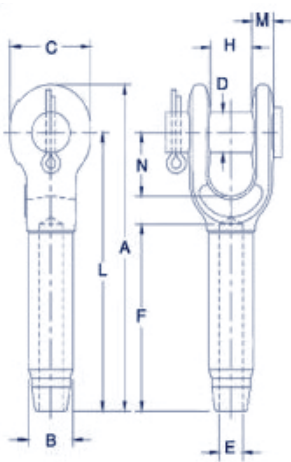
WARNING: Follow manufacturers recommendations for resin socketing.

Swage Sockets

Swage sockets are recommend for use on 6 x 19 or 6 x 36 IWRC regular lay ropes.

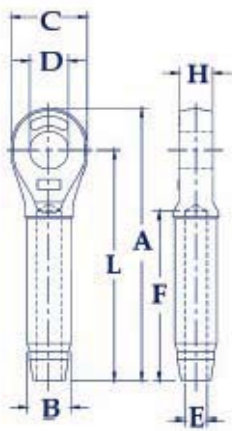
They are NOT recommended for use on fiber core or lang lay ropes. Sockets properly applied have an efficiency rating of 100% based on the catalog breaking strength of wire rope. In accordance with ANSI B30.9, all slings terminated with swage sockets shall be proof loaded. Maximum Proof Load shall not exceed 50% of XXIP rope catalog breaking strength.

OPEN SWAGE SOCKETS



S-501 Open Socket Specifications												
Rope Size (in.)	Weight Each (lbs)	Before Swage Dimensions										Max. After Swage Dim. (in.)
		A	B	C	D	E	F	H	L	M	N	
1/4	.52	4.78	.50	1.38	.69	.27	2.19	.69	4.00	.38	1.47	.46
5/16	1.12	6.30	.78	1.62	.81	.34	3.25	.80	5.34	.48	1.67	.71
3/8	1.30	6.30	.78	1.62	.81	.41	3.25	.80	5.34	.48	1.67	.71
7/16	2.08	7.82	1.01	2.00	1.00	.49	4.31	1.00	6.69	.56	1.96	.91
1/2	2.08	7.82	1.01	2.00	1.00	.55	4.31	1.00	6.69	.56	1.96	.91
9/16	4.67	9.54	1.27	2.38	1.19	.61	5.38	1.25	8.13	.68	2.21	1.16
5/8	4.51	9.54	1.27	2.38	1.19	.68	5.38	1.25	8.13	.68	2.21	1.16
3/4	7.97	11.61	1.56	2.75	1.38	.80	6.44	1.50	10.00	.78	2.69	1.42
7/8	11.52	13.37	1.72	3.13	1.63	.94	7.50	1.75	11.63	.94	3.20	1.55
1	17.80	15.47	2.00	3.69	2.00	1.07	8.63	2.00	13.38	1.07	3.68	1.80
1 1/8	25.25	17.35	2.25	4.06	2.25	1.19	9.75	2.25	15.00	1.19	4.18	2.05
1 1/4	35.56	19.20	2.53	4.50	2.50	1.34	10.81	2.50	16.50	1.27	4.64	2.30
1 3/8	43.75	21.10	2.81	5.25	2.50	1.46	11.88	2.41	18.13	1.46	5.25	2.56
1 1/2	58.50	23.17	3.08	5.50	2.75	1.59	12.94	3.00	19.75	1.65	5.70	2.81
1 3/4	88.75	26.70	3.40	6.25	3.50	1.87	15.06	3.50	23.00	2.07	6.67	3.06
2	146.20	31.15	3.94	7.80	3.75	2.12	17.06	4.00	26.75	1.81	8.19	3.56

CLOSED SWAGE SOCKETS



S-502 Closed Socket Specifications										
Rope Size (in.)	Weight Each (lbs)	Before Swage Dimensions								Max. After Swage Dim. (in.)
		A	B	C	D	E	F	H	L	
1/4	.33	4.28	.50	1.38	.76	.27	2.19	.50	3.50	.46
5/16	.75	5.42	.77	1.62	.88	.34	3.25	.68	4.50	.71
3/8	.72	5.42	.78	1.62	.88	.41	3.25	.68	4.50	.71
7/16	1.42	6.88	1.01	2.00	1.07	.49	4.31	.87	5.75	.91
1/2	1.42	6.88	1.01	2.00	1.07	.55	4.31	.87	5.75	.91
9/16	2.92	8.59	1.27	2.38	1.28	.61	5.38	1.14	7.25	1.16
5/8	2.85	8.59	1.27	2.38	1.28	.68	5.38	1.14	7.25	1.16
3/4	5.00	10.25	1.56	2.88	1.49	.80	6.44	1.33	8.63	1.42
7/8	6.80	11.87	1.72	3.12	1.73	.94	7.50	1.53	10.09	1.55
1	10.40	13.56	2.00	3.62	2.11	1.07	8.63	1.78	11.50	1.80
1 1/8	14.82	15.03	2.25	4.00	2.37	1.19	9.75	2.03	12.75	2.05
1 1/4	21.57	16.94	2.53	4.50	2.62	1.34	10.81	2.25	14.38	2.30
1 3/8	28.54	18.59	2.81	5.00	2.62	1.46	11.88	2.29	15.75	2.56
1 1/2	38.06	20.13	3.08	5.38	2.87	1.59	12.94	2.56	17.00	2.81
1 3/4	51.00	23.56	3.40	6.25	3.63	1.87	15.06	3.08	20.00	3.06
2	89.25	27.13	3.94	7.25	3.88	2.12	17.06	3.31	23.00	3.56

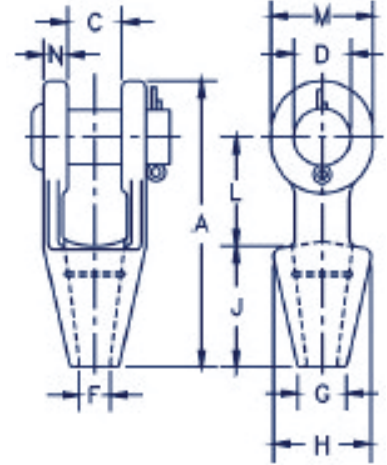
Open Wire Rope Spelter Sockets

Sockets are cast alloy steel.

Meets or exceeds Federal Specifications RR-S-550 latest revision strength & dimensionally.

Drawing illustrates on internal groove used on 1/4" through 3/4".

7/8" through 1 1/2" have two grooves. 1 5/8" and larger have three grooves.



STANDARD OPEN WIRE ROPE SPELTER SOCKETS

Rope Dia. (in.)	Structural Strand Dia. (in.)	Weight Each (lbs.)	Dimensions (in.)									
			A	C	D	F	G	H	J	L	M	N
1/4	-	1.10	4.56	.75	.69	.38	.69	1.56	2.25	1.56	1.31	.36
5/16 - 3/8	-	1.30	4.84	.81	.81	.50	.81	1.69	2.25	1.75	1.50	.44
7/16 - 1/2	-	2.25	5.56	1.00	1.00	.56	.94	1.88	2.50	2.00	1.88	.50
9/16 - 5/8	1/2	3.60	6.75	1.25	1.19	.69	1.13	2.25	3.00	2.50	2.25	.56
3/4	9/16 - 5/8	5.83	7.94	1.50	1.38	.81	1.25	2.62	3.50	3.00	2.62	.62
7/8	11/16 - 3/4	9.65	9.25	1.75	1.63	.94	1.50	3.25	4.00	3.50	3.13	.80
1	13/16 - 7/8	15.5	10.56	2.00	2.00	1.13	1.75	3.75	4.50	4.00	3.75	.88
1 1/8	15/16 - 1	21.5	11.81	2.25	2.25	1.25	2.00	4.12	5.00	4.62	4.12	1.00
1 1/4 - 1 3/8	1 1/16 - 1 1/8	31.00	13.19	2.50	2.50	1.50	2.25	4.75	5.50	5.00	4.75	1.13
1 1/2	1 3/16 - 1 1/4	47.25	15.12	3.00	2.75	1.63	2.75	5.25	6.00	6.00	5.38	1.19
*1 5/8	1 5/16 - 1 3/8	55.00	16.25	3.00	3.00	1.75	3.00	5.50	6.50	6.50	5.75	1.31
*1 3/4 - 1 7/8	1 7/16 - 1 5/8	82.00	18.25	3.50	3.50	2.00	3.13	6.38	7.50	7.00	6.50	1.56
*2 - 2 1/8	1 11/16 - 1 3/4	129.00	21.50	4.00	3.75	2.25	3.75	7.38	8.50	9.00	7.00	1.81
*2 1/4 - 2 3/8	1 13/16 - 1 7/8	167.00	23.50	4.50	4.25	2.50	4.00	8.25	9.00	10.00	7.75	2.13
*2 1/2 - 2 5/8	1 15/16 - 2 1/8	252.00	25.50	5.00	4.75	2.88	4.50	9.25	9.75	10.75	8.50	2.38
*2 3/4 - 2 7/8	2 3/16 - 2 7/16	315.00	27.25	5.25	5.00	3.12	4.88	10.50	11.00	11.00	9.00	2.88
*3 - 3 1/8	2 1/2 - 2 5/8	380.00	29.00	5.75	5.25	3.38	5.25	11.12	12.00	11.25	9.50	3.00
*3 1/4 - 3 3/8	2 3/4 - 2 7/8	434.00	30.88	6.25	5.50	3.62	5.75	11.88	13.00	11.75	10.00	3.12
*3 1/2 - 3 5/8	3 - 3 1/8	563.00	33.25	6.75	6.00	3.88	6.50	12.38	14.00	12.50	10.75	3.25
*3 3/4 - 4	-	783.00	36.25	7.50	7.00	4.25	7.25	13.62	15.00	13.50	12.50	3.50

Spelter socket terminations have an efficiency rating of 100%, based on the catalog strength of wire rope. Ratings are based on recommended use with 6 x 7, 6 x 19, or 6 x 37, IPS or XIP (EIP), XXIP (EEIP), RRL, FC, or IWRC wire rope.

*Cast Alloy Steel

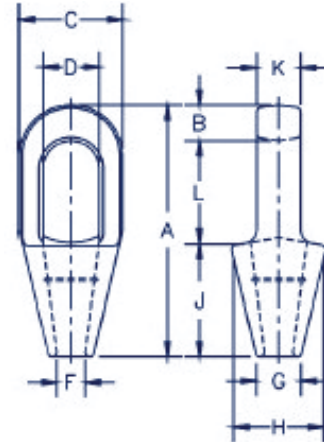
Closed Wire Rope Spelter Sockets

Sockets are cast alloy steel.

Meets or exceeds Federal Specifications RR-S-550 latest revision strength & dimensionally.

Drawing illustrates on internal groove used on 1/4" through 3/4".

7/8" through 1 1/2" have two grooves. 1 5/8" and larger have three grooves.



STANDARD CLOSED WIRE ROPE SPELTER SOCKETS

Rope Dia. (in.)	Structural Strand Dia. (in.)	Weight Each (lbs.)	Dimensions (in.)									
			A	B	C	D*	F	G	H	J	K	L
1/4	-	.50	4.50	.50	1.50	.88	.38	.69	1.56	2.25	.50	1.75
5/16 - 3/8	-	.75	4.88	.62	1.69	.97	.50	.81	1.69	2.25	.69	2.00
7/16 - 1/2	-	1.50	5.44	.69	2.00	1.16	.56	.94	1.88	2.50	.88	2.25
9/16 - 5/8	1/2	2.50	6.31	.81	2.63	1.41	.69	1.12	2.38	3.00	1.00	2.50
3/4	9/16 - 5/8	4.25	7.56	1.06	3.00	1.66	.81	1.25	2.75	3.56	1.25	3.00
7/8	11/16 - 3/4	7.25	8.75	1.25	3.63	1.88	.94	1.50	3.25	4.00	1.50	3.50
1	13/16 - 7/8	10.50	9.88	1.38	4.13	2.30	1.13	1.75	3.75	4.44	1.75	4.00
1 1/8	15/16 - 1	14.25	11.00	1.50	4.50	2.56	1.25	2.00	4.13	5.00	2.00	4.50
1 1/4 - 1 3/8	1 1/16 - 1 1/8	19.75	12.12	1.63	5.30	2.81	1.50	2.25	4.75	5.50	2.25	5.00
1 1/2	1 3/16 - 1 1/4	29.20	13.94	1.94	5.33	3.19	1.63	2.75	5.25	6.00	2.50	6.00
** 1 5/8	1 5/16 - 1 3/8	36.00	15.13	2.13	5.75	3.25	1.75	3.00	5.5	6.50	2.75	6.50
** 1 3/4 - 1 7/8	1 7/16 - 1 5/8	57.25	17.25	2.19	6.75	3.75	2.00	3.13	6.38	7.50	3.00	7.56
** 2 - 2 1/8	1 11/16 - 1 3/4	79.00	19.50	2.44	7.63	4.38	2.25	3.75	7.38	8.50	3.25	8.56
** 2 1/4 - 2 3/8	1 13/16 - 1 7/8	105.00	21.13	2.63	8.50	5.00	2.50	4.00	8.25	9.00	3.63	9.50
** 2 1/2 - 2 5/8	1 15/16 - 2 1/8	140.00	23.50	3.12	9.50	5.50	2.88	4.50	9.25	9.75	4.00	10.62
** 2 3/4 - 2 7/8	2 3/16 - 2 7/16	220.00	25.38	3.12	10.75	6.25	3.12	4.88	10.19	11.00	4.88	11.25
** 3 - 3 1/8	2 1/2 - 2 5/8	276.00	27.00	3.25	11.50	6.75	3.38	5.25	11.50	12.00	5.25	11.75
** 3 1/4 - 3 3/8	2 3/4 - 2 7/8	313.00	29.25	4.00	12.25	7.25	3.62	5.75	12.25	13.00	5.75	12.25
** 3 1/2 - 3 5/8	3 - 3 1/8	400.00	31.00	4.00	13.00	7.75	3.88	6.50	13.00	14.00	6.25	13.00
** 3 3/4 - 4	-	542.00	33.25	4.25	14.25	8.50	4.25	7.25	14.25	15.00	7.00	14.00

are based on the recommended use with 6 x 7, 6 x 19 or 6 x 37, IPS or XIP (EIP), XXIP (EEIP), RRL, FC or IWRC wire rope.

* Diameter of pin must not exceed pin used on companion 416 socket. Reference adjacent page "D" dimension.

** Cast Alloy Steel

Wedge Sockets

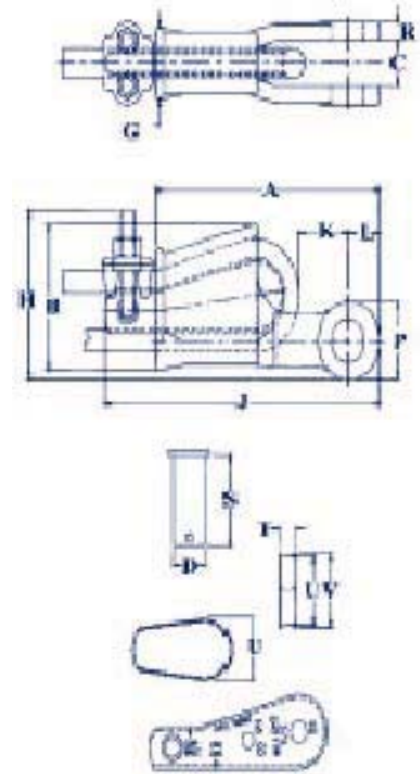
Wedge socket terminations have an efficiency rating of 80% based on the strength of XXIP wire rope.

Wedge sockets, except welded 5/8" and 3/4", meet the performance requirements of Federal Specification RR-S-550D, Type C, except those provisions required of the contractor.

Wedge sockets meet or exceed the requirements of ASME B30.26.

Available with Bolt, Nut and Cotter Pin.

Assemblies include Socket, Wedge, Pin and Wire Rope Clip.



3

Wire Rope Dia.		Dimensions (in.)															Weight Each (lbs.)	Wedge Only Weight Each (lbs.)
(in.)	(mm)	A	B	C	D	G	H	J*	K*	L	P	R	S	T	U	V		
3/8	9 - 10	5.69	2.72	.81	.81	1.38	3.06	7.80	1.88	.88	1.56	.44	2.13	.44	1.25	1.38	3.18	.50
1/2	11 - 13	6.88	3.47	1.00	1.00	1.62	3.76	8.91	1.26	1.06	1.94	.50	2.56	.53	1.75	1.88	6.15	1.05
5/8	14 - 16	8.25	4.30	1.25	1.19	2.12	4.47	10.75	1.99	1.22	2.25	.56	3.25	.69	2.00	2.19	9.70	1.79
3/4	18 - 19	9.88	5.12	1.50	1.38	2.44	5.28	12.36	2.41	1.40	2.63	.66	3.63	.78	2.34	2.56	14.50	2.60
7/8	20 - 22	11.25	5.85	1.75	1.63	2.69	6.16	14.37	2.48	1.67	3.13	.75	4.31	.88	2.69	2.94	21.50	4.00
1	24 - 26	12.81	6.32	2.00	2.00	2.94	6.96	16.29	3.04	2.00	3.75	.88	4.70	1.03	2.88	3.28	30.75	5.37
1 1/8	28	14.38	6.92	2.25	2.25	3.31	7.62	18.34	2.56	2.25	4.25	1.00	5.44	1.10	3.25	3.56	45.30	7.30
1 1/4	30 - 32	16.34	8.73	2.62	2.50	3.56	9.39	20.48	2.94	2.34	4.50	1.06	6.13	1.19	4.62	4.94	64.90	10.60

*Nominal

NOTE: For intermediate rope sizes, use next larger size socket.

Turnbuckles

Suggested Turnbuckle / Wire Rope Pairing
Based on Wire Rope and Termination Type

6X19 Or 6X36 Class IWRC EIP Wire Rope Size (Ins.)	Wire Rope Terminated With Properly Attached Drop Forged Wire Rope Clips - Use Turnbuckle Size		Wire Rope Terminated With Flemish Eye Splice and Swaged Sleeve - Use Turnbuckle Size	
	Hook x Hook Hook x Eye	Jaw x Jaw Jaw x Eye Eye x Eye	Hook x Hook Hook x Eye	Jaw x Jaw Jaw x Eye Eye x Eye
1/4	1/2	3/8	1/2	1/2
5/16	5/8	1/2	5/8	1/2
3/8	3/4	5/8	3/4	5/8
7/16	7/8	5/8	7/8	3/4
1/2	1	3/4	1	3/4
9/16	1 1/4	7/8	1 1/4	7/8
5/8	1 1/2	7/8	--	1
3/4	--	1	--	1 1/4
7/8	--	1 1/4	--	1 1/4
1	--	1 1/2	--	1 1/2
1 1/8	--	1 1/2	--	1 3/4
1 1/4	--	1 3/4	--	2
1 3/8	--	2	--	2
1 1/2	--	2	--	2 1/2
1 5/8	--	2 1/2	--	2 1/2
1 3/4	--	2 1/2	--	2 1/2
1 7/8	--	2 1/2	--	2 3/4
2	--	2 3/4	--	2 3/4

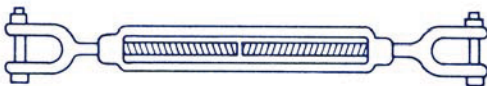
These combinations are suggestions only based solely on Working Load data.
The user bears the responsibility of ensuring that the turnbuckle / wire rope combination
actually used is suitable for the application and purpose intended.



Hook x Hook



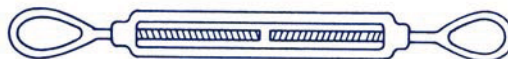
Hook x Eye



Jaw x Jaw



Jaw x Eye



Eye x Eye



Turnbuckles

When Ordering Be Sure To Specify:

- 1st— Diameter of thread.
- 2nd— Length of take-up.
- 3rd— Self colored or galvanized.
- 4th— The type of end fittings desired.

Meets or exceeds the performance requirements of ASTM F - 1145
(formerly Federal Specification FF-T-791)

2



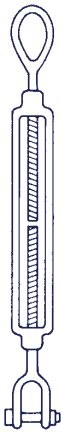
EYE & EYE



HOOK & EYE



HOOK & HOOK



JAW & EYE



JAW & JAW

Diameter X Take-up Inches	Average Overall Length With Ends in Closed Position	Approx. Weight Each in lbs.			Working Load Limit in lbs.	
		With Eyes and/or Hooks	Jaw & Eye	Jaw & Jaw	Hook & Hook Hook & Eye	Eye & Eye Jaw & Eye Jaw & Jaw
1/4 X 4	8.25	.30	.30	.40	400	500
5/16 X 4 1/2	9.56	.50	.53	.58	700	800
3/8 X 6	11.88	.75	.82	.93	1,000	1,200
1/2 X 6	13.31	1.50	1.62	1.68	1,500	2,200
1/2 X 9	16.31	1.75	1.82	1.85	1,500	2,200
1/2 X 12	19.31	2.18	2.19	2.20	1,500	2,200
5/8 X 6	15.30	2.63	2.69	2.82	2,250	3,500
5/8 X 9	18.50	3.00	3.01	3.25	2,250	3,500
5/8 X 12	21.50	3.25	3.50	3.75	2,250	3,500
3/4 X 6	17.00	3.75	4.25	4.68	3,000	5,200
3/4 X 9	20.00	4.50	5.00	5.38	3,000	5,200
3/4 X 12	23.00	5.75	5.75	6.12	3,000	5,200
3/4 X 18	29.00	7.00	7.25	7.75	3,000	5,200
7/8 X 12	24.63	8.38	8.88	9.38	4,000	7,200
7/8 X 18	30.63	10.25	10.60	11.44	4,000	7,200
1 X 6	20.63	10.75	11.10	11.80	5,000	10,000
1 X 12	26.63	11.25	12.00	12.88	5,000	10,000
1 X 18	32.63	14.00	14.75	16.10	5,000	10,000
1 X 24	38.63	17.00	17.75	18.60	5,000	10,000
1 1/4 X 12	29.88	19.00	21.20	23.60	6,500	15,200
1 1/4 X 18	35.88	24.10	26.00	26.60	6,500	15,200
1 1/4 X 24	41.88	25.00	28.70	31.20	6,500	15,200
1 1/2 X 12	32.38	27.00	31.10	35.50	7,500	21,400
1 1/2 X 18	38.38	31.20	36.40	40.70	7,500	21,400
1 1/2 X 24	44.38	38.20	44.20	47.60	7,500	21,400
1 3/4 X 18	41.38	53.00	57.50	62.00	-	28,000
1 3/4 X 24	47.75	58.00	60.00	64.00	-	28,000
2 X 24	51.75	90.00	102.00	115.00	-	37,000
2 1/2 X 24	58.50	163.00	180.00	200.00	-	60,000
2 3/4 X 24	61.50	180.00	214.00	248.00	-	75,000

Larger sizes available per request.

Lock nuts available per request.

Jaw end fittings sizes 1/4" through 5/8" have bolts and nuts.

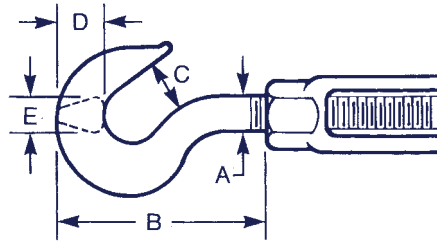
Jaw end fittings sizes 3/4" through 2 3/4" have pins and cotters.

Large jaw sizes available with bolts and nuts upon special request.

Turnbuckles

For sizing information, refer to our website: <http://www.swwrinc.com>

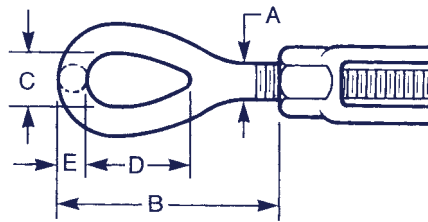
HOOK



HOOK

DIMENSIONS IN INCHES				
A	B	C	D	E
1/4	1.66	.45	.41	.25
5/16	1.91	.50	.44	.31
3/8	2.28	.56	.53	.38
1/2	2.84	.66	.69	.50
5/8	3.53	.84	.84	.63
3/4	4.31	.97	1.00	.75
7/8	5.00	1.13	1.19	.88
1	5.69	1.25	1.38	1.00
1 1/4	6.91	1.50	1.50	1.06
1 1/2	8.69	1.88	1.75	1.31

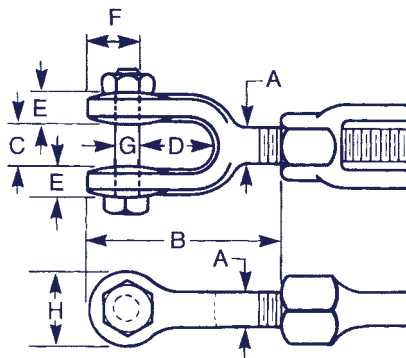
EYE



EYE

DIMENSIONS IN INCHES				
A	B	C	D	E
1/4	1.78	.34	.78	.22
5/16	2.19	.44	.94	.28
3/8	2.56	.53	1.13	.34
1/2	3.22	.72	1.44	.44
5/8	3.88	.88	1.75	.50
3/4	4.69	1.00	2.13	.63
7/8	5.25	1.25	2.38	.75
1	6.38	1.44	3.00	.88
1 1/4	7.75	1.81	3.56	1.13
1 1/2	8.63	2.13	4.13	1.25
1 3/4	10.00	2.38	4.69	1.50
2	12.13	2.69	5.75	1.75
2 1/2	13.56	3.13	6.50	2.00
2 3/4	15.00	3.25	7.00	2.25

JAW



JAW

DIMENSIONS IN INCHES							
A	B	C	D	E	F	G	H
1/4	1.63	.41	.63	.28	.50	.25	.63
5/16	2.00	.47	.88	.28	.50	.25	.69
3/8	2.19	.50	.88	.31	.59	.31	.81
1/2	2.75	.63	1.06	.41	.75	.38	1.00
5/8	3.50	.75	1.31	.50	1.03	.50	1.31
3/4	4.13	.94	1.50	.56	1.28	.63	1.63
7/8	4.84	1.13	1.75	.69	1.47	.75	1.88
1	5.53	1.19	2.06	.78	1.66	.88	2.13
1 1/4	7.19	1.75	2.81	1.00	2.09	1.13	2.63
1 1/2	7.88	2.06	2.81	1.06	2.47	1.38	3.13
1 3/4	9.38	2.38	3.38	1.25	2.91	1.63	3.50
2	10.88	2.50	3.75	1.56	3.53	2.00	4.19
2 1/2	13.34	2.88	4.19	1.56	4.63	2.25	5.63
2 3/4	15.00	3.50	4.44	1.63	5.38	2.75	6.13

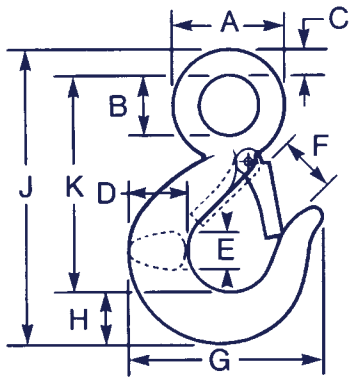
Proof load twice rated load

*Ultimate load five times rated load

Meets or exceeds the performance requirements of ASTM F - 1145 (formerly Federal Specification FF-T-791)

Hooks

2



EYE HOOKS

Carbon or Alloy steel forged, heat-treated, with latch installed or without latch.

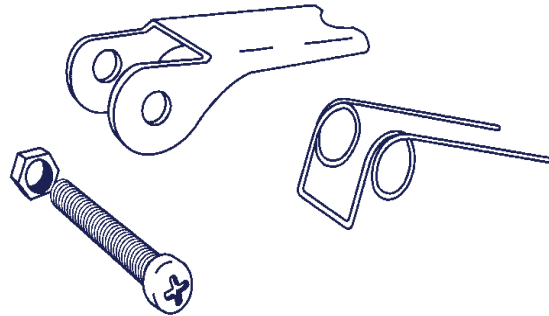
Size (WLL)* Tons		Dimensions in Inches										Approximate Weight Each with Latch in Pounds
Carbon	Alloy	A	B	C	D	E	F	G	H	J	K	
**3/4	1	1.50	.75	.38	.88	.63	.94	2.88	.75	4.38	3.25	.60
**1	1 1/2	1.75	.88	.44	1.00	.69	1.06	3.13	.81	4.88	3.63	.82
**1 1/2	2	2.00	1.13	.44	1.19	.81	1.06	3.50	1.00	5.50	4.13	1.44
2	3	2.38	1.25	.59	1.38	.94	1.22	3.94	1.19	6.31	4.56	1.94
3	5	3.00	1.56	.69	1.63	1.19	1.50	5.00	1.50	7.94	5.75	3.94
5	7	3.81	2.00	.88	2.06	1.50	1.88	6.25	1.75	10.00	7.38	7.75
7 1/2	11	4.69	2.44	1.13	2.63	1.63	2.25	7.56	2.25	12.44	9.06	15.4
-	15	5.37	2.84	1.26	2.94	2.19	2.51	8.30	2.59	13.93	10.07	22.2
-	22	6.64	3.50	1.58	3.50	2.69	3.30	10.30	3.00	17.06	12.50	37.6

* Working Load Limit applies only when the load is applied to the center of the saddle of the hook.

** 3/4, 1, 1 1/2, and 2 Ton Carbon Steel Hooks also available in Hot Galvanized.

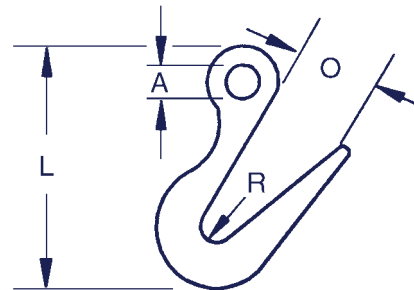
STAINLESS LATCH KITS

Size (WLL)* Tons		Approximate Weight Each with Latch in Pounds
Carbon	Alloy	
3/4	1	.02
1	1-1/2	.02
1 1/2	2	.03
2	3	.03
3	5	.05
5	7	.09
7 1/2	11	.17
10	15	.25
-	22	.75



SORTING HOOK Forged alloy steel, heat treated.

Working Load Limit, 2-1/2" from tip	2 Tons
Working Load Limit, at bottom	7-1/2 Tons
Approximate Weight Each	7.75 Pounds
Overall Length	L 9.69"
I.D. of Eye	A 1.38"
Opening at Top of Hook	O 2.81"
Radius at Bottom of Hook	R .63"

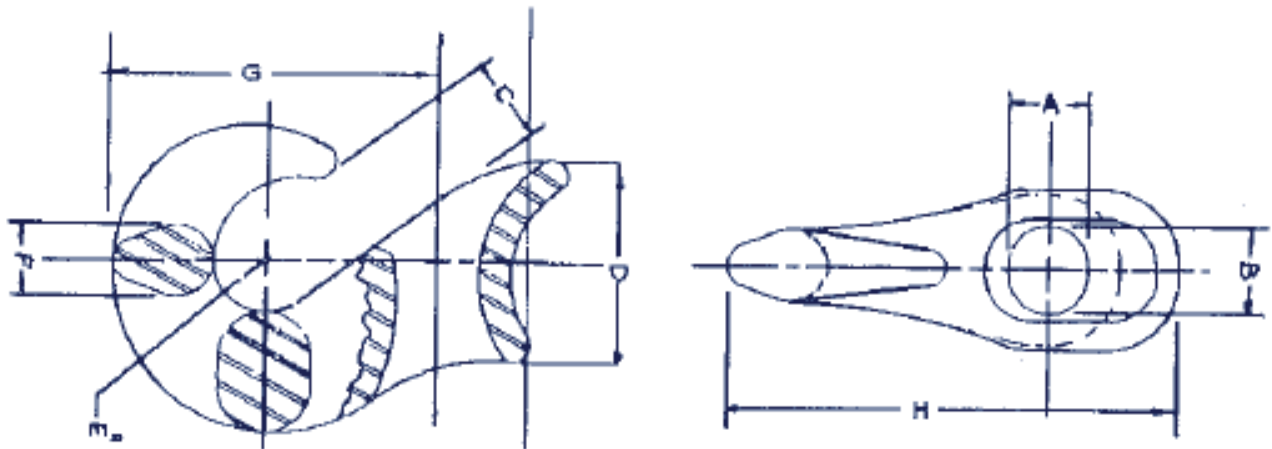


Sliding Choker Hooks

FLAT OR BRAIDED SLIDING HOOKS												
Hook No.	6 Parts	Wt. Lbs.	8 Parts	Rated Load - Lbs.	A	B	C	D	E	F	G	H
*0	3/32	1	1/16	1,500	9/16	9/16	1/2	1 3/4	3/8	5/8	2 3/4	3 3/4
1	1/8	1.25	3/32	2,600	11/16	11/16	5/8	2	7/16	11/16	3 1/8	4 1/4
2	3/16	1.75	1/8	3,400	13/16	15/16	7/8	2 1/8	17/32	3/4	3 11/32	4 11/16
3	-	3.25	3/16	5,100	1 3/16	1 1/4	1 1/16	2 3/4	5/8	15/16	3 31/32	5 5/8
4	1/4	5	1/4	7,000	1 7/16	1 7/16	1 5/32	3	5/8	1 1/8	4 5/8	6 1/4
5	5/16	6.5	5/16	13,000	1 3/4	1 3/4	1 7/16	3 1/8	3/4	1 3/8	5 1/16	7 3/16
6	3/8	11	3/8	15,000	2	2	1 17/32	4 1/4	7/8	1 9/16	6 5/16	8 5/8
7	7/16	26	7/16	23,000	2 5/16	2 5/16	1 3/4	5 5/8	1	1 3/4	8 11/16	11 5/8
8	1/2 - 9/16	50	1/2	30,000	2 13/16	2 13/16	2 3/16	7	1 1/4	2	10 5/8	14 1/2

ROUND OR REGULAR SLIDING HOOKS												
Hook No.	Rope Size	Wt. Lbs.	Rated Load - Lbs.	Thimble Size	A	B	C	D	E	F	G	H
*1/4 - 5/16	1/4 - 5/16	1	1,500	1/4 - 5/16	9/16	9/16	1/2	1 3/4	3/8	5/8	2 3/4	3 3/4
3/8	3/8	1.31	2,600	3/8	11/16	11/16	5/8	2	7/16	11/16	3 1/8	4 1/4
1/2	1/2	1.85	3,400	1/2	3/4	3/4	7/8	2 1/8	1/2	3/4	3 5/8	4 13/16
5/8	5/8	4	5,100	5/8	7/8	7/8	1 1/8	2 3/4	9/16	15/16	4 7/16	5 15/16
3/4	3/4	4.5	8,000	3/4	1	1	1 1/8	3 1/8	11/16	1 1/4	4 11/16	6 7/16
7/8 - 1	7/8 - 1	10	15,000	7/8 - 1	1 1/4	1 1/4	1 1/4	4 1/4	7/8	1 9/16	6 1/16	8 1/8
1 1/8 - 1 1/4	1 1/8 - 1 1/4	26	23,000	1 1/8 - 1 1/4	2 5/16	2 5/16	1 3/4	5 5/8	1	1 3/4	8 11/16	11 5/8
1 3/8 - 1 1/2	1 3/8 - 1 1/2	50	30,000	1 3/8 - 1 1/2	2 13/16	2 13/16	2 3/8	7	1 1/4	2	10 5/8	14 1/2

* Manganese Bronze Alloy
Used in any other way than the Choker Configuration, will not be warranted.

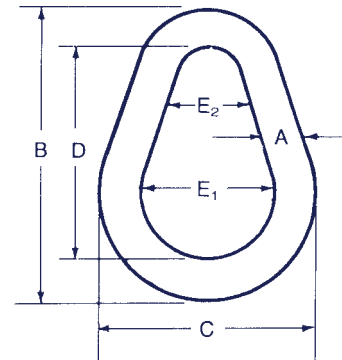




Steel Links

2

**HEAT-TREATED, HIGH TEST CARBON STEEL
PEAR SHAPE LINK**



Approx. Dimensions in Inches						Rated Load Single Pull Pounds	Weight Each (Lbs.)
A	B	C	D	E ₁	E ₂		
3/8	3	2 1/4	2 1/4	1 1/2	3/4	1,800	.23
1/2	4	3	3	2	1	2,900	.51
5/8	5	3 3/4	3 3/4	2 1/2	1 1/4	4,200	1.08
3/4	6	4 1/2	4 1/2	3	1 1/2	6,000	1.90
7/8	7	5 1/4	5 1/4	3 1/2	1 3/4	8,300	2.90
1	8	6	6	4	2	10,800	4.60
1 1/4	10	7 1/2	7 3/4	5	2 1/2	16,750	9.20
1 3/8	11	8 1/4	8 1/4	5 1/2	2 3/4	20,500	11.00
1 1/2	12	9	9	6	3	25,000	14.30
1 3/4	14	10 1/2	10 1/2	7	3 1/2	34,000	22.60
2	16	12	12	8	4	45,000	33.80
2 1/4	18	13 1/2	13 1/2	9	4 1/2	56,000	48.20
2 1/2	20	15	15	10	5	68,500	66.00
2 3/4	22	16 1/2	16 1/2	11	5 1/2	84,500	88.00
3	24	18	18	12	6	100,000	114.00
3 1/4	26	19 1/2	19 1/2	13	6 1/2	117,500	146.00
3 1/2	28	21	21	14	7	136,500	181.00
3 3/4	30	22 1/2	22 1/2	15	7 1/2	155,000	223.00
4	32	24	24	16	8	176,000	271.00

NOTES: Available in larger sizes and alloy steel per special order.
Minimum breaking strength is six times the rated working load.
Galvanized on request only.
Ridgeless electrically side welded.

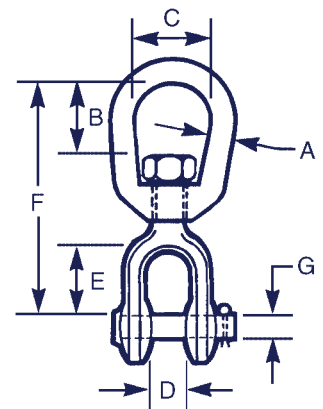
Drop Forged Swivels

**CAUTION: NEVER EXCEED WORKING LOAD LIMIT.
SWIVELS ARE NOT INTENDED TO ROTATE UNDER LOAD.**

JAW & EYE SWIVELS

Meets or exceeds the performance requirements of Federal Specification RR-C-271 (latest revision).
Hot galvanized.

Size (A) in Inches	Working Load Limit in Pounds	Approximate Weight Each in Pounds	Dimensions in Inches					
			B	C	D	E	F	G
1/4	850	.22	.69	.75	.38	.88	2.69	.25
5/16	1,200	.39	.88	1.00	.50	.88	2.88	.31
3/8	2,250	.71	.94	1.25	.63	1.00	3.50	.38
1/2	3,600	1.4	1.38	1.50	.81	1.31	4.50	.50
5/8	5,200	2.3	1.63	1.75	1.00	1.50	5.31	.63
3/4	7,200	3.5	1.75	2.00	1.19	1.75	6.06	.75
7/8	10,000	5.7	2.08	2.25	1.20	2.07	7.06	.88
1	12,500	9.5	2.27	2.44	1.73	2.81	8.56	1.12
1 1/4	18,000	15.7	2.69	3.13	2.06	2.81	9.44	1.38
1 1/2	45,200	55.0	4.20	4.00	2.37	4.43	14.75	2.25



EYE & EYE SWIVELS

Meets or exceeds the performance requirements of Federal Specification RR-C-271 (latest revision).
Hot galvanized.

Size (A) in Inches	Working Load Limit in Pounds	Approximate Weight Each in Pounds	Dimensions in Inches			
			B	C	E	F
1/4	850	.20	.69	.75	.94	2.88
5/16	1,200	.38	.75	1.00	1.13	3.63
3/8	2,250	.68	.94	1.25	1.38	4.25
1/2	3,600	1.4	1.38	1.50	1.94	5.63
5/8	5,200	2.5	1.63	1.75	2.31	6.63
3/4	7,200	3.8	1.81	2.00	2.56	7.25
7/8	10,000	6.0	2.06	2.25	3.02	8.28
1	12,500	8.5	2.35	2.48	3.43	9.53
1 1/4	18,000	16.3	2.69	3.13	3.69	11.13
1 1/2	45,200	46.0	4.18	4.00	4.18	17.12

